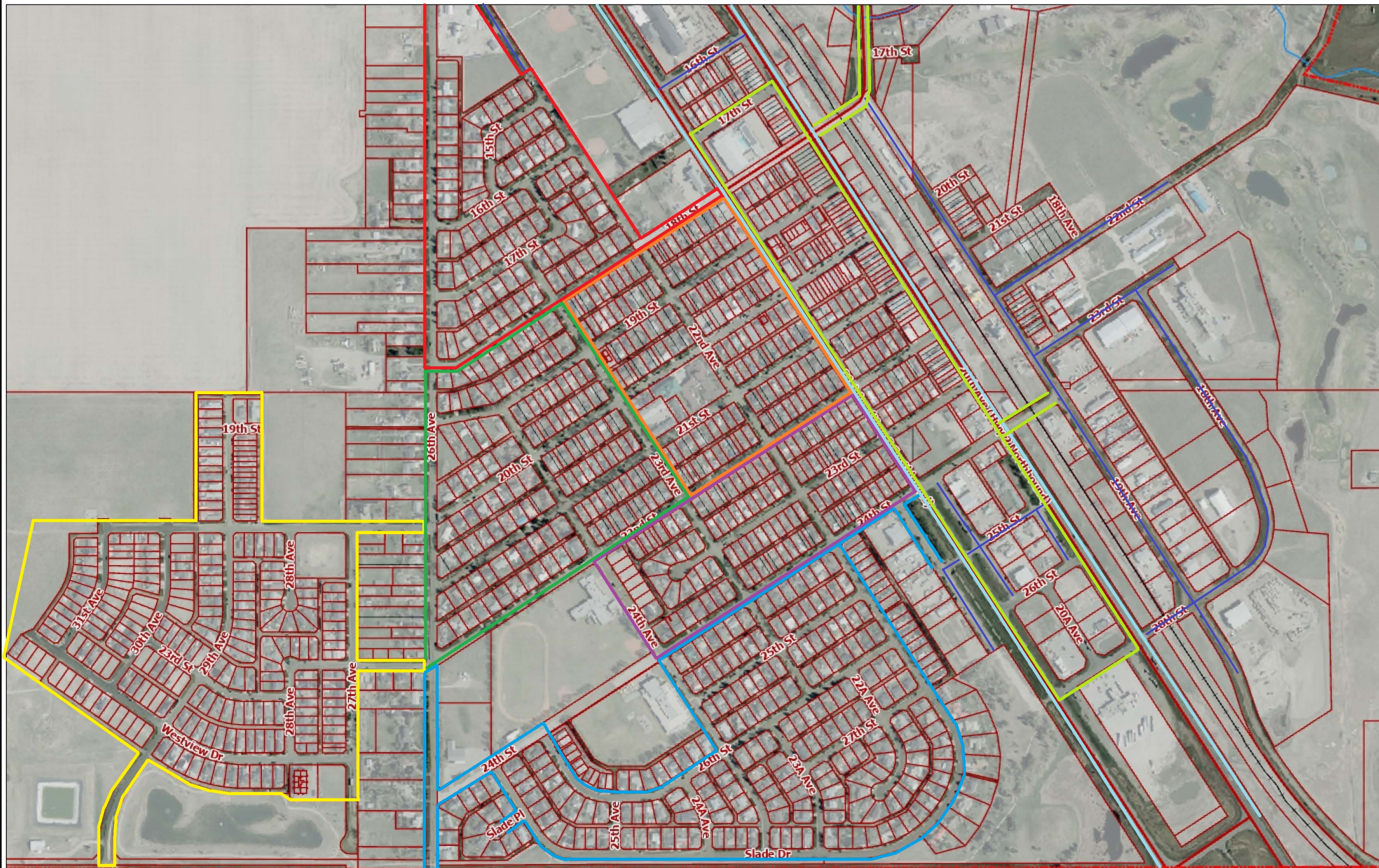


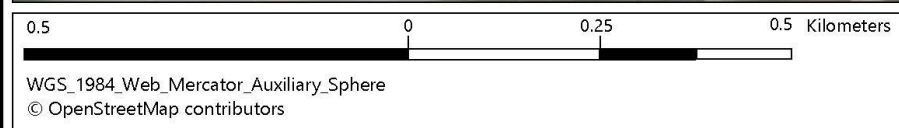
Town of Nanton



Legend

- Boundary
 - Highway Symbols
 - Hwy 2 Symbol
 - Hwy 533 Symbol
 - Hwy 2
 - Hwy 533
 - Railway
 - Road Labels
 - Mosquito Creek
 - Reservoir
 - Title Linework
 - Parcels
- All lines in purple are gravel roads and do not need sweeping
- North and Southbound Hwy 2 shoulders
 - Zone 1 - Westview
 - North Meadows - 15, 16, 17, 18 Street
 - 19, 20, 21 & 22 Street - 23 Ave, 24 Ave and 26 Ave
 - 19, 20, 21, 22 Street - Hwy 2 SB, 22 Ave, 23 Ave
 - 22, 23, 24 Street - Hwy 2 SB, 22 Ave, 23 Ave & 24 Ave
 - Slade Drive - 24, 25, 26, 27, Slade Drive - 22, 22A, 23, 23A, 24, 24A, 25, 26 Ave. and service road in front of Fire Hall
 - Between North and Southbound Highways - 17, 18, 19, 20, 21, 22, 23, 26, 28 - 20A and 24 Street (NB Hwy to 19 Ave.) and Hwy 533 (NB Hwy 2 to bridge)

1: 10,000



This map is a user generated static output from an Internet mapping site and is for reference only. Data layers that appear on this map may or may not be accurate, current, or otherwise reliable.
THIS MAP IS NOT TO BE USED FOR NAVIGATION

Notes